



Integra for Notes Personal Edition User Manual

Integra for Notes 4.7
Documentation Version V 4.7/1.0

13th January 2009



Lotus Notes Integration for MS Office

www.integra4notes.com

Contents

1	INTRODUCTION TO INTEGRA FOR NOTES FOR THE END-USER	1
2	RUNNING INTEGRA PROFILES THROUGH A LOTUS NOTES CLIENT	2
2.1	RUNNING PREPARED PROFILES	3
2.1.1	Editing an Existing Profile.....	4
2.2	RUNNING INTEGRA QUICK REPORTS	4
2.3	DATA SELECTION DIALOG	5
2.3.1	Using Field Maps.....	5
2.4	SORTING & GROUPING DIALOG	5
2.4.1	Sorting.....	6
2.4.2	Grouping	7
2.5	FILTERING DIALOG	9
2.5.1	Using Stored Filters	9
2.5.2	Setting Filter Conditions Manually.....	10
2.5.3	Selection of data set on which to apply condition.....	11
2.6	PROMPT USER DIALOG	11
2.6.1	Document Title	12
2.6.2	Integra Action	12
2.6.3	Notes Action	12
2.6.4	Save as PDF	14
2.6.5	Protection	14
2.6.6	Password.....	15
2.7	RUNTIME FOREIGN LANGUAGE SUPPORT.....	16
3	RUNNING INTEGRA PROFILES FROM A WEB BROWSER	18
3.1	THE INTEGRA PROFILE DIALOG BOX.....	18
3.1.1	Running an Individual Profile	20

Preface

We thank you for being a user of Integra for Notes Personal Edition, the free version of Integra which allows users to generate the following from their Lotus Notes personal address book contacts:

- » mail merge letters to Microsoft Word >> View Video of [Mail Merge Letter](#)
- » e-mail shots to Notes mail
- » labels to Microsoft Word >> [View Video of Labels](#)
- » export to Excel of contact details

Integra Personal Edition ships with a number of ready made letters and label formats as well as reports related to the Notes Personal Address Book while also allowing the user to create their own Microsoft Word® mail merge letters, labels and Microsoft Excel® reports. In addition, Integra Personal Edition allows the usage of the Integra Quick Reports facility which, through the use of a simple 4 step wizard, allows end-users to create their own reports, mail merge letters and labels.

Integra Personal Edition is a free member of the Integra family of solutions which are the leading reporting and integration solution for Microsoft Office and Symphony.

- » **Integra for Notes** allows designers to predefine report layouts which push data to Word, Excel and Symphony and are then made available to end-users. These solution works with a Lotus Notes client, web browser or scheduled and allows great depth and breadth of reporting from multiple views and databases and even supports usage of LotusScript Integra events.
- » **Integra Quick Reports** allows end-users to create Excel reports and Word mail merges and labels through a simple 4 step wizard.

The Integra Personal Edition is a free tool designed to work only with the Lotus Notes Personal Address Book. For the ability to use similar facilities on other Lotus Notes databases/applications, please refer to Integra for Notes and/or Integra Quick Reports.

Further detailed manuals about the complete product range can be found at www.integra4notes.com/manuals.

These materials are copyrighted and the intellectual property rights are vested in Shireburn Software Ltd. Copying through any means is unauthorized without the express written permission of an officer of Shireburn Software Ltd.

Every reasonable attempt has been made to ensure the accuracy of this user manual and that it reflects the operations of the product, however users of Integra for Notes are responsible for ensuring that the product and its documentation are suitable for the needs of that organization. No warranties in respect of this user manual are being made or can be assumed.

The product Integra for Notes may at times be referred to within this documentation by its shortened name of Integra. These products are not to be confused with any trademarked product that may exist with a similar name, whose rights are hereby recognized, and this is used only for ease of reference.

© Shireburn Software Ltd 2008/9

Lotus, Lotus Notes, Domino and their respective logos as well as the IBM Business Partner logo are all registered trademarks of IBM Corporation. Microsoft, Windows, Word, Excel and Internet Explorer as well as their respective logos are all trademarks of Microsoft Corporation. Acrobat Writer, Acrobat Distiller and PDF are registered trademarks of Adobe Corp. All other trademarks are hereby duly acknowledged as the property of their respective owners.

About Shireburn Software

Shireburn Software Ltd is the author and distributor of the Integra family of products. The company is an IT Services company specializing in the development and implementation of collaborative solutions based on the Lotus Domino and Lotus Notes environments as well as other systems for financial and inventory management.

Established in 1983, the company has been active in the field of Lotus Notes development since 1993 and has considerable experience in the range of skills required covering business analysis, consultancy, creation of functional specifications, design, development, implementation and on-going support of such solutions.

Shireburn Software was a founding member of the Lotus Key Partner program in 1990, which then transitioned into the Lotus Business Partner program, where Shireburn was an Advanced member until the program was merged with the IBM PartnerWorld for Software program in which Shireburn is an active member. Shireburn is an IBM Advanced Business Partner.



Shireburn Software Ltd has won various awards for its Integra range of products including:

- » Editors Choice Award by **Lotus Advisor Magazine** in 2007
- » Editors Choice Award by **Lotus Advisor Magazine** in 2006
- » Editors Choice Silver Award by **Lotus Advisor Magazine** in the Business Intelligence Category in 2005
- » Winner of the **e-Pro Magazine Apex Award** in the Portals and Content Management category in 2004
- » Finalist in the **e-Pro Magazine Apex Award** within the Reporting in 2003



Carolina Court, Guze Cali Street
Ta' Xbiex, XBX 1425, Malta
Tel US (508) 915 4805 or (650) 276 0506
Tel UK (020) 7193 1296
Tel EU (+356) 2131 9977
Fax (+356) 2131 9528
info@shireburn.com
www.shireburn.com
www.integra4notes.com

About this Manual

This user manual is aimed at the user who is running Integra for Notes Personal Edition to generate mail merges and labels to Microsoft Word and reports to Microsoft Excel from their Lotus Notes Personal Address Book.

This manual is divided into the following main sections:

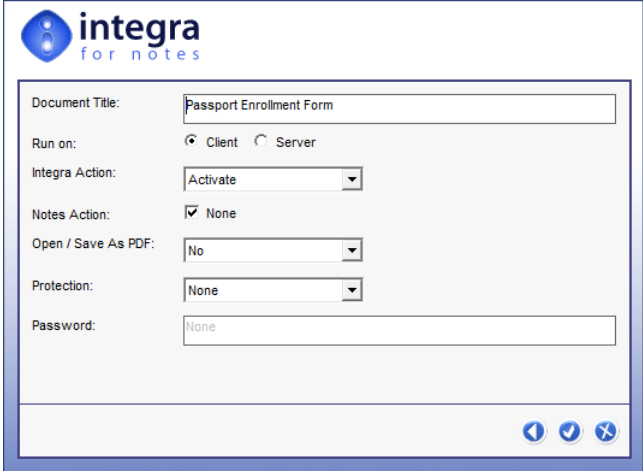
- » A brief introduction to Integra for Notes and Integra Quick Reports
- » Installing Integra for Notes Personal Edition
- » Running predefined reports
- » Creating your own mail merges, letters and reports

Various other manuals are available related to other products in the Integra family. These manuals are available at www.integra4notes.com/manuals.

Conventions used within this Manual

This user manual is designed to be a guide to the functionality of Integra for Notes as available to the end-user. The keys required to be selected by a user are explained within this manual by the use of angled brackets. Therefore, an instruction to select the key called **Enter** will appear as follows: select **<Enter>**

Prompts given to the user to allow selection of one or more options are shown in a dialog box as shown alongside:



The screenshot shows a dialog box titled "integra for notes". It contains the following fields and options:

- Document Title: Passport Enrollment Form
- Run on: Client Server
- Integra Action: Activate (dropdown menu)
- Notes Action: None
- Open / Save As PDF: No (dropdown menu)
- Protection: None (dropdown menu)
- Password: None (text field)

At the bottom right of the dialog box, there are three small icons: a left arrow, a checkmark, and a close button (X).

Hot tips of particular interest to readers are displayed as follows:



If your profile has had its confidentiality restricted, only those users mentioned in the profile's confidentiality field will be able to see the profile.

Bright ideas and recommendations are shown within the following type of display:



To create a profile document linking to a particular database, the user does not require *Designer* rights in the Access Control List of the database to which the link is being implemented but rather just *Reader* level rights.


1 Introduction to Integra for Notes for the End-User

Integra for Notes provides the capability to:

- » generate reports on data held in Lotus Notes databases. The process generates these reports into Microsoft Excel & Word files, XML and PDF files leveraging the power of these environments to utilize features such as graphic, pivot tables, data filtering etc.
- » integrate Lotus Notes data with Microsoft Word and Excel.
- » import data held in Microsoft Excel, Text files or complete Word files into Lotus Notes documents.

Integra for Notes allows authorized users to create Integra Profiles. An Integra Profile is a normal Notes document within the Integra Lotus Notes database which defines the fields being imported or exported, the layout of the Word or Excel template, and settings such as filtering conditions, output options etc. related to a particular import or export process.

Integra profiles can be executed in a number of ways including:

- » manually by an end-user clicking on the Integra SmartIcon while in a particular Lotus Notes database (other than the Integra database) which generates a dialog box listing all the profiles linked to that database that the user is currently in. 
- » manually by an end-user clicking on an action button or hotspot in an application
- » automatically according to a timed schedule.

Once an Integra profile is run, the data can be:

- » presented on screen in Word, Excel or Adobe Acrobat Reader
- » e-mailed out to intended recipients, the e-mail addresses of which can be defined in the profile or computed at runtime according to a format
- » printed
- » saved to a Notes document
- » saved to a file on the local hard disk or a network drive
- » combinations of the above

While the process of creating profiles in Integra for Notes is covered by a separate manual (Integra for Notes Designer's Manual), this Integra for Notes end-user manual explains how pre-defined import and export profiles can be run by the end user.

Integra Quick Reports, a companion product within the same Integra family of products, provides facilities for end-users to create and run ad-hoc reports to Excel as well as mail merges and labels via Microsoft Word. While *Integra for Notes* is able to deal with more advanced reporting and data integration needs, *Integra Quick Reports* is very simple and aimed directly at self-service by the end-user. Read about creating and running *Integra Quick Reports* in the user manual entitled *Integra Quick Reports – User Manual* also found at www.integra4notes.com/manuals.

The following subsequent sections are contained in this user manual:

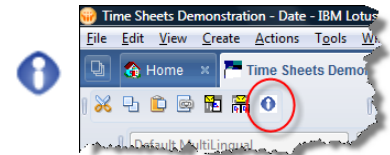
- » Section 2 - Running Integra Profiles through a Lotus Notes Client
- » Section 3 - Running Integra Profiles through a Web Browser

2 Running Integra Profiles through a Lotus Notes Client

The use of profiles in Integra for Notes is designed to be very simple. Because profiles are normally created to link a specific Notes database with a Word, Excel or Text file, either for Import or Export, Integra is actually accessed from the source database from which or into which the data is to be accessed.

With ease of use heavily in mind when creating Integra, especially for the end user of the profiles, all the user needs to do to run an Integra profile from a Lotus Notes Client, is to:

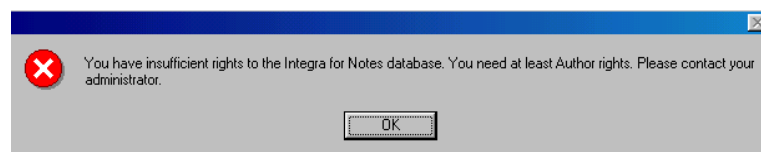
- » Open the Lotus Notes database from which the data is to be exported or into which it is to be imported
- » Select the appropriate view (unless the profile is already linked automatically to a specific view – see later explanation of profiles)
- » Select the appropriate documents to be reported on by dragging the mouse down the selection column in the view as per standard Notes client procedures (unless the profile is already linked automatically to a specific formula – see later explanation of profiles)
- » Either click on the Integra for Notes icon in the SmartIcons bar or select an Action Button or Hotspot which is linked to a specific Integra profile. See a later explanation about linking Action Buttons to Integra profiles.



This explanation assumes that the Integra for Notes product has been installed and configured for use within your organisation in accordance with the instructions contained in the Integra Installation & Configuration Manual.

If the user's *Notes* preferences are set not to display SmartIcons or Toolbars (see the SmartIcons displayed below), this can be modified through the menu option called *File-Preferences-Toolbar Preferences*.


In the event that the user does not have a minimum of Author rights to the Integra database, the system will advise the user by means of the following message:



A developer may want to further automate the process through which an end-user runs a particular Integra profile and rather than requiring the end-user to select the documents and then click on the Integra SmartIcon, a standard Lotus Notes Action Button or Hotspot could be made available on a particular Notes view or form which executes a pre-named Integra profile. This will allow the user to select the Action Button and Integra will execute the profile without providing a list of available profiles to be executed to the user. This method is required in the case of a user making use of a Web Browser as SmartIcons are not supported by the Web Browser.

This procedure allows a greater level of integration between a specific Notes application and the Integra environment. Details of how to set up such an Action Button in an application to call Integra for Notes are contained in the Integra for Notes Designer's Manual.

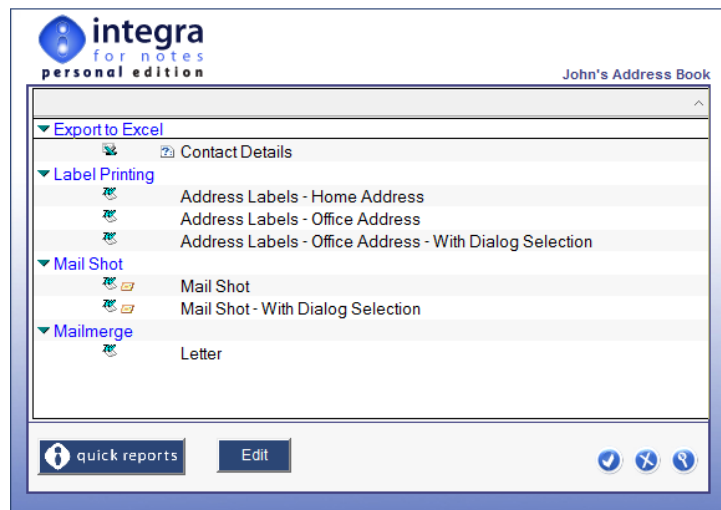
2.1 Running Prepared Profiles

On selection of the Integra for Notes SmartIcon, Integra for Notes will present the user with a dialog box to either select from one of the prepared Integra profile or the running of Integra Quick Reports, which will allow ad-hoc selection of the fields to be exported, sorting & grouping options, data filtering and storage options. 







This section of the manual addresses the running of prepared profiles.

The profiles displayed here will be those profiles created in the Integra database which are linked either to the currently selected Lotus Notes database or to a design template that is used by the current Notes database.

Profiles will be displayed by the profiles' Runtime Category (a field contained on the profile). The dialog box title will reflect the title of the source Notes database from which the data will be accessed, for instance the example alongside shows the dialog box executed from the Time Sheets database, with the name at the top right side of the dialog box.



Profiles may contain a series of icons alongside them indicating features of the profile, these icons are described in the table below:

Icon	Description
	Generates a profile using Microsoft Word
	Generates a profile using Microsoft Excel
	Identifies saved report created using <i>Integra Quick Reports</i>
	Output is set to be e-mailed out.
	Output is set to be stored to a file.
	Indicates that runtime dialog boxes will be displayed on execution

As will be further described in the Integra for Notes Designer's Manual, the Integra Profile contains a Reader Names field called *Confidentiality* which can be used to make available specific reports only to particular users, groups or roles. The user running Integra will only be presented within the dialog box with a list of those profiles to which he has access.

When the dialog is displayed, by default all available profiles are categorized by type. By clicking the little marrow at the right side of the top bar, the order can be changed between *categorized by type* and *sorted by profile name*.

Select a profile from the list and click on the OK button to run the chosen profile.
Click on the Cancel button to abort Integra and to return to the current database.



2.1.1 Editing an Existing Profile

The *Edit* button allows authorized users to edit a profile listed in the profile list dialog. Users able to edit profiles at runtime need to be allocated the [RuntimeEdit] role. In addition, to edit an Integra for Notes profile a user must have either *Editor* rights or above to the Integra for Notes database or be included in the *Profile Editors* field on the Integra profile.



If a profile is selected which was created using Integra for Notes, then on editing the profile, the user will be presented with the profile directly inside the Integra for Notes database and all the standard facilities available for profile creation and editing become available to the user. For more details see the *Integra for Notes Designer's Manual*.

If an Integra Quick Report profile is selected in the list when the *Edit* button is used, then the report is loaded into the Quick Reports wizard to allow modification of the report. For more details about the options available in Integra Quick Reports please refer to the Integra Quick Reports User Manual.

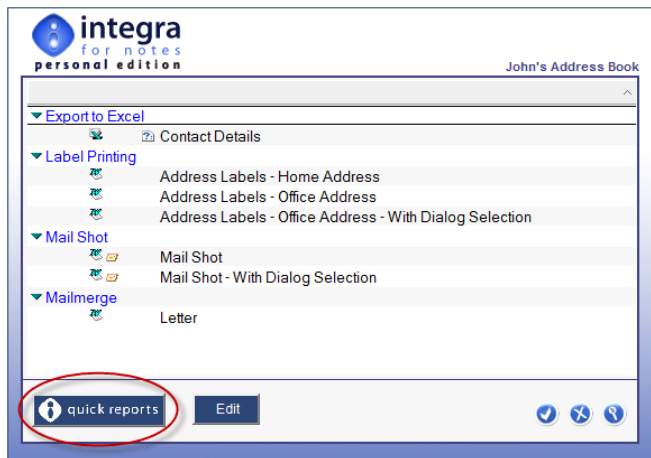
2.2 Running Integra Quick Reports

Integra Quick Reports allows an end-user to generate their own ad-hoc reports to Excel and mail merge letters/labels to Word by running a very simple 4 step wizard. Integra Quick Reports allows end-users to gain independence of reporting from their development team for simpler reports and to allow developers to focus on the more complex reporting tasks.

Clicking on the Integra Quick Reports button on the main Integra dialog box which also shows the pre-defined Integra profiles will trigger the processing of Quick Reports.

Integra Quick Reports consists of 4 steps in a wizard each related to the following:

- » Step 1 - Data Selection
- » Step 2 – Sorting & Group (for Excel exports) or Choose Word Template (for mail merge or labels)
- » Step 3 – Data Filtering
- » Step 4 – Output options



Each of these steps will be described in turn. For greater detail you can also refer to the Integra Quick Reports User Manual.

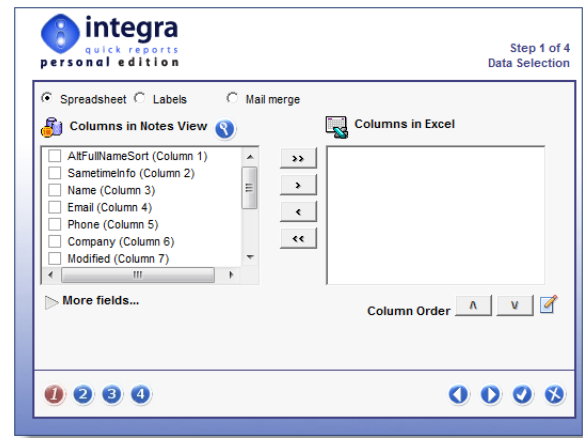
2.3 Data Selection Dialog

On running Integra Quick Reports you will be presented with the first step dialog box related to Data Selection. This dialog will display a list of the columns found in the currently selected view of the Personal Address book on the left side.

The export type field allows the setting of the option of whether to export to a *Spreadsheet*, *Labels* or *Mail Merge*. *Spreadsheet* exports are the default.

Selection of one or more fields via check box and clicking on the *Add* or *Remove* arrows will result in the selected fields being added to the *Columns in Excel* section of the dialog box.

In the event that the *Labels* or *Mail merge* option has been selected, then the section will relate to *Fields in Word*.

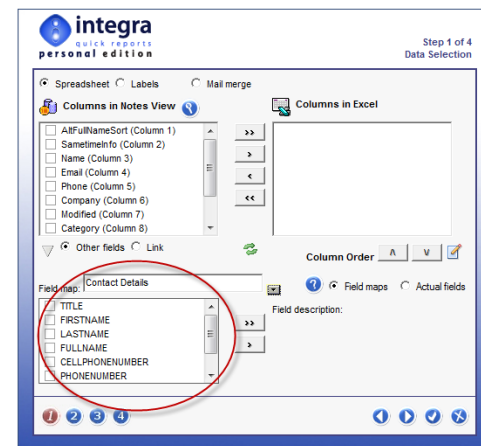


2.3.1 Using Field Maps

Field Maps are a facility available in Integra Quick Reports to display a list of fields to the user which either show sensible field names to the end user or a sub-set of fields which are available so as to reduce complexity to the end-user. *Field Maps* are pre-created by a designer and the Personal Edition contains 3, one collected the contact details from the form's design, one collecting the business address details and the other the home address details. The free Integra Personal Edition does not allow the creation of additional *Field Maps* however the full version of Integra does.

This facility is available by clicking on the *More Fields* arrow at which point you will be presented with a list of the available *Field Maps* and showing the fields related to the currently selected *Field Map*.

Select from the list of available fields, viewing a more detailed description of the contents of the field and add these fields to the Excel or Word export by use of the arrow buttons.




2.4 Sorting & Grouping Dialog

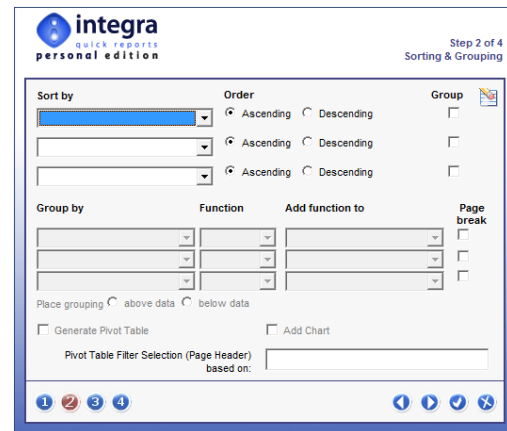
An option was introduced into Integra for Notes in version 4.5 that allows a profile to be set to enable an end-user to select sorting and grouping options related to the report being generated at the time of running this report. This facility delegates the sorting and grouping options to end-users allowing a generic profile to be created to meet the needs of various sorting and grouping options.

For the sake of clarity, grouping is the facility of Excel to display data categorized by a grouping field including totals, averages, counts etc related to the chosen field. Excel supports three hierarchical levels of grouping and these are available directly from the Integra Sorting & Grouping dialog.

An Integra profile is set to display the *Runtime Sorting & Grouping* dialog by a licensed user of the *Integra for Notes Designer Edition* and this is done in the *Filtering & Sorting* tab of the Integra profile. Refer to the *Integra for Notes Designer Manual* for further instructions on setting this option.

Profiles which are set to present Integra’s runtime dialog boxes are shown in the Profile Dialog List with a question mark icon alongside them. 

When the profile being run by a user is set to display the *Runtime Sorting & Grouping* dialog the following dialog box is presented to the user.



The *Sorting & Grouping dialog* is intended to perform two separate although related tasks:

- » **Sorting** – this determines the order in which the data is shown in Excel or Word. For instance selecting to sort by the field called *Company* will mean that the data in Excel is shown in rows sorted alphabetically by the contents of the *Company* column.
- » **Grouping** – this feature (only available when executing an Integra Excel profile but not a Word profile) invokes Excel’s Data→Sub-total command to group data and sub-total according to a particular criteria such as the *Company* or *Employee* columns. Grouping is related to sorting in that Excel will not allow grouping on data which is not sorted by the same criteria. To group data by *Company* requires the data to be sorted by *Company*.

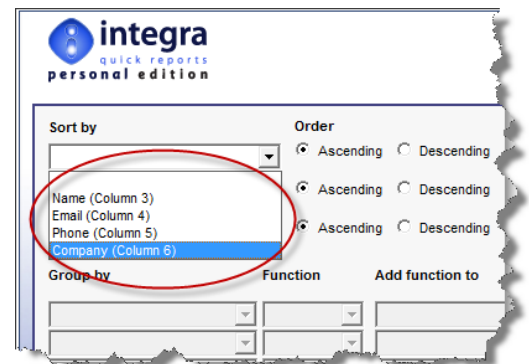
2.4.1 Sorting

The sorting facility allows the determination of the order of presentation of the reported data in Microsoft Excel. While additional sorting can be undertaken within the Excel spreadsheet itself, using Excel’s Data→Sort command, the sorting set within Integra can be selected by the user with great ease.

The use of the sorting facility is optional and, if no sorting is defined, the data will be presented in Excel in the order in which it is shown in the Notes view.

Integra allows sorting to be undertaken at up to 3 levels. As a result, for instance, it may be possible to report on time sheet data sorted by company name with all rows related to the same company then being sorted by date and then by work type. This recursive sorting capability allows powerful presentational facilities to the user.

Selection of the fields/columns on which the sorting is to operate is undertaken by selecting the columns directly in the appropriate fields in the dialog as shown in the circled screenshot alongside.



The pull-down menu will present the user with a list of the available fields by which to sort. Select the sorting order for up to 3 levels of sorting.

Each sorting level can be defined as being in *Ascending* or *Descending* order by selecting the appropriate radio button in the *Order* section. Sorting defaults to *Ascending*.

In addition each level can be set to be grouped. This functionality is defined in the section below.

2.4.2 Grouping

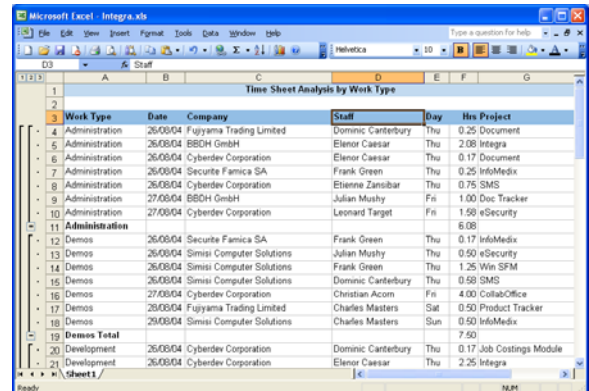
The *Grouping* facility in Integra is only applicable for Excel exports as grouping is not a relevant functionality for a Microsoft Word profile.

The *Grouping* facility allows for the automatic presentation in the Excel spreadsheet using Excel's Sub-Total commands. Grouping, which can only be implemented if the data is also sorted in the same order as it is grouped, will allow the presentation of the data "categorized" under the field on which the data is grouped allowing collapsing and expanding of data per group in a manner somewhat similar to a Notes view, and optionally showing totals, averages or counts of the data per group.

The screenshot alongside shows an Excel spreadsheet generated from a time sheets Notes database which shows data grouped by work type with a total per work type.

You will notice the minus signs in the left hand margin which allow collapsing of the data in that group (resulting for instance in presentation as in the screen shot alongside with collapsed group data).

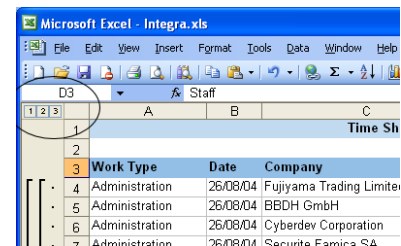
Once collapsed, the minus sign shows as a plus sign to allow expansion again.



Work Type	Date	Company	Staff	Day	Hrs	Project
Administration	26/08/04	Fujiyama Trading Limited	Dominic Carterbury	Thu	0.25	Document
Administration	26/08/04	BBDH GmbH	Elenor Caesar	Thu	2.08	Integra
Administration	26/08/04	Cyberdev Corporation	Elenor Caesar	Thu	0.17	Document
Administration	26/08/04	Securite Famica SA	Frank Green	Thu	0.25	InfoMedix
Administration	26/08/04	Cyberdev Corporation	Etienna Zanzibar	Thu	0.75	SMS
Administration	27/08/04	BBDH GmbH	Julian Mushy	Fri	1.00	Doc Tracker
Administration	27/08/04	Cyberdev Corporation	Leonard Target	Fri	1.50	eSecurity
Administration Total					6.08	
Demos	26/08/04	Securite Famica SA	Frank Green	Thu	0.17	InfoMedix
Demos	26/08/04	Simisi Computer Solutions	Julian Mushy	Thu	0.50	eSecurity
Demos	26/08/04	Simisi Computer Solutions	Frank Green	Thu	1.25	Win SFM
Demos	26/08/04	Simisi Computer Solutions	Dominic Carterbury	Thu	0.50	SMS
Demos	27/08/04	Cyberdev Corporation	Christian Acorn	Fri	4.00	CubaOffice
Demos	26/08/04	Fujiyama Trading Limited	Charles Masters	Sat	0.50	Product Tracker
Demos	29/08/04	Simisi Computer Solutions	Charles Masters	Sun	0.50	InfoMedix
Demos Total					7.50	
Development	26/08/04	Cyberdev Corporation	Dominic Carterbury	Thu	0.17	Job Costings Module
Development	26/08/04	Cyberdev Corporation	Elenor Caesar	Thu	2.25	Integra

In addition the 1 2 3 icons shown at the top left of the Excel spreadsheet (see alongside) allow display of all groups at each level. All this is standard Excel sub-total functionality which is just triggered by Integra.

To group the Excel spreadsheet by the sorted column, select the *Group* checkbox alongside the field shown circled below.

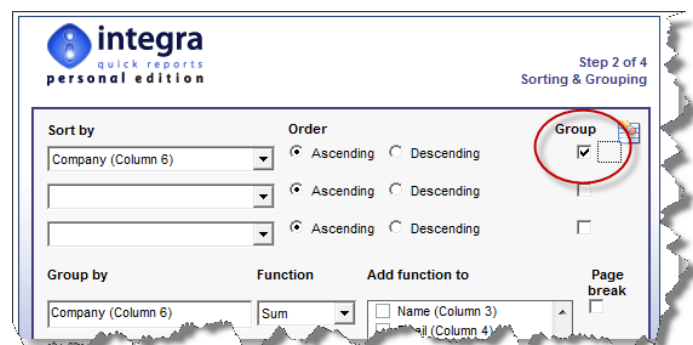


Work Type	Date	Company
Administration	26/08/04	Fujiyama Trading Limited
Administration	26/08/04	BBDH GmbH
Administration	26/08/04	Cyberdev Corporation
Administration	26/08/04	Securite Famica SA

Once the *Group* checkbox has been selected, a set of fields will open up allowing setting of the options related to that group. These typically revolve around the function used for grouping, i.e. *Sum*, *Average*, *Count*, *Min*, *Max* etc as well as the particular field on which the function is to operate. Integra defaults to the use of the *Sum* function.

Once grouping is selected, it is mandatory that a field is selected on which the grouping function is to operate.

If more than one grouping level is selected, these settings will be required to be applied to all the levels.



Step 2 of 4
Sorting & Grouping

Sort by: Company (Column 6) Order: Ascending Descending

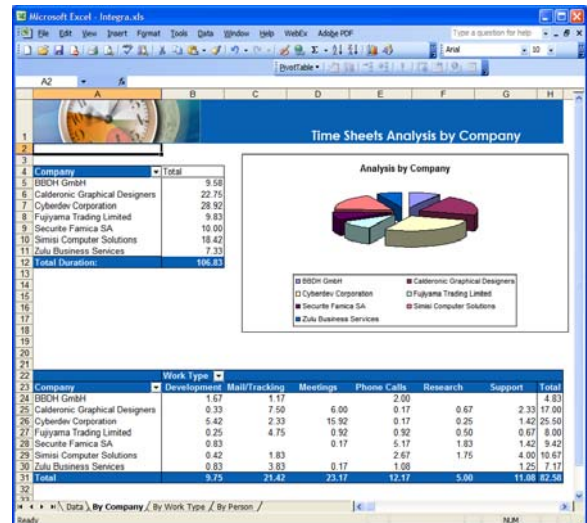
Group by: Company (Column 6) Function: Sum Add function to: Name (Column 3) Page break

2.4.2.1 Generate Pivot Table

PivotTables are a standard feature of Microsoft Excel that enable very sophisticated analysis and cross-tabulation of data within an Excel spreadsheet enabling a user to create multidimensional data views by dragging and dropping column headings to move data around.

A pivot table is an excellent reporting tool that sorts and sums independently of the original data layout in the spreadsheet. The example shown at the bottom half of the screenshot alongside shows a summary of exported data contained in the *Data* worksheet shown with a unique list of *companies* down the rows and *work types* along the columns

Integra for Notes, through its usage of Excel, is able to allow users to select the creation of Excel PivotTables related to a particular report being run.

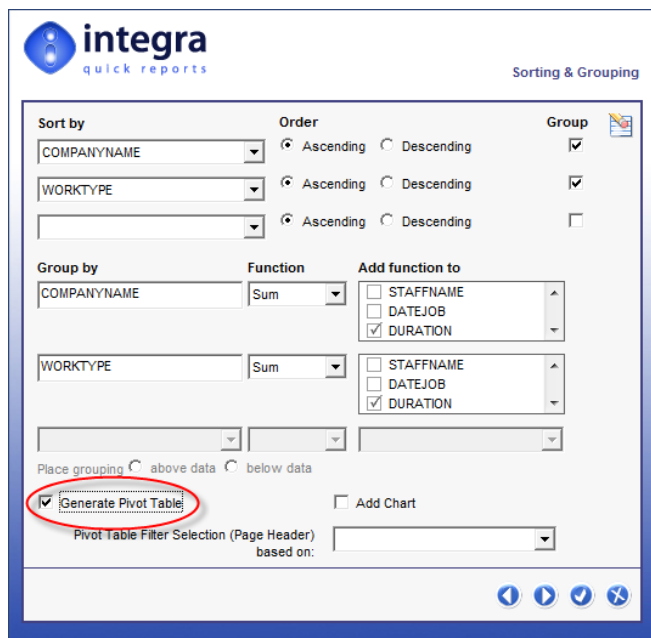


While the use of a Pivot Table can be defined in the Integra profile itself, a profile which allows the use of the *Runtime Sorting and Grouping* dialog by the end user also allows a Pivot Table to be created simply by the use of a single checkbox found in the runtime Sorting & Grouping dialog circled in the screenshot alongside.

This facility requires that sorting and grouping has been enabled to at least 2 levels. In the case of the example shown, the data would be grouped by *Company* and then by *Work Type*.

When creating the Excel spreadsheet, Integra will automatically generate a second worksheet within the spreadsheet containing a Pivot Table with the field used for the first sort level set for the rows and the second sorting field set for the columns. Once the template is created, further touching up of the PivotTable including greater depth of analysis would be perfectly possible.

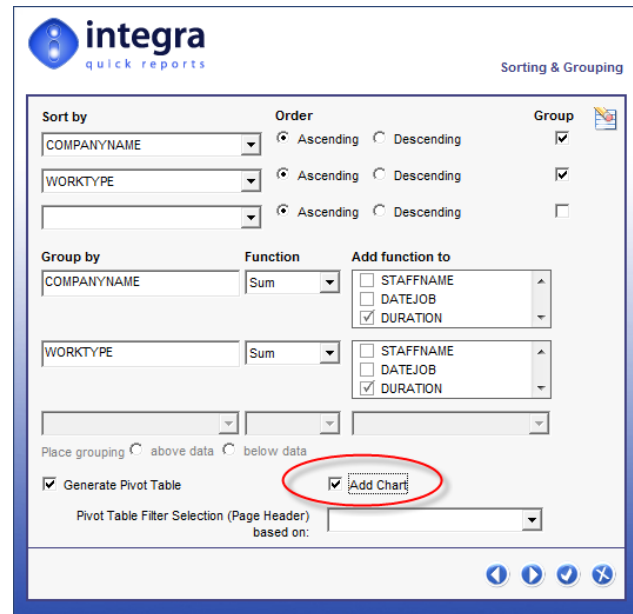
If the Generate Pivot Table option is selected, the user will also be able to set a value for the *Pivot Table Page Header* field and the Pivot Table will add the selected field to the PivotTable header. This feature will allow a user to select a value from this field and only display data meeting that filter condition. As an example, if the field called *Project* was set for the *Pivot Table Header*, then a list of available projects will be shown and, if one particular project is selected, then only the data related to that project will be displayed of course still showing the companies down the rows and the work types across the columns. If you are not familiar with PivotTables in Microsoft Excel, we recommend you access Excel's help resources related to this subject.



2.4.2.2 Charting

If the Generate Pivot Table option has been selected (see section 2.4.2.1), it is also possible to generate a default chart related to the data shown in the Pivot Table. The chart will be generated in a separate worksheet and will use the chart type defined as the default chart for your Excel settings.

To enable the creation of a chart select the *Add Chart* checkbox shown in the *Runtime Sorting & Grouping* dialog and circled in the screenshot shown alongside.



2.5 Filtering Dialog

The *Data Filtering* step of the *Runtime Sorting & Grouping* dialog allows the user to report only on data which meets particular conditions which can be set by the end user at runtime or can be selected from preset *Stored Filters*. This step allows easy selection of the data conditions using a user interface similar to the setting of rules in the Lotus Notes mail file.



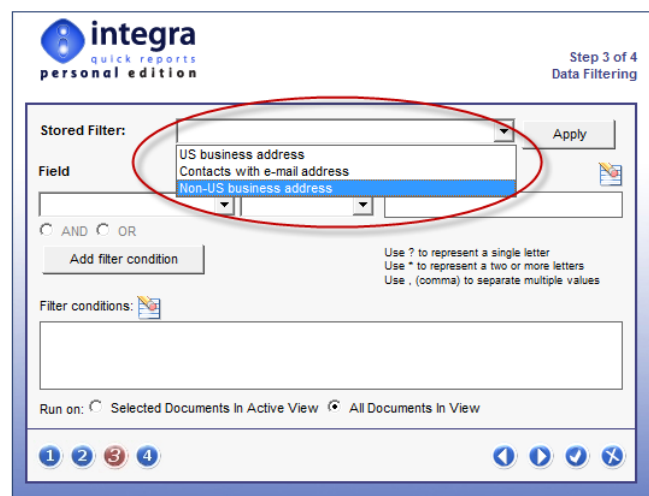
Integra utilizes the full-text index of a database to optimize the performance of the data filtering and databases which have a full-text index will exhibit significantly higher levels of performance when using a Report which has filtering conditions set. Databases which do not have a full-text index will still function correctly but with a lower level of performance.

2.5.1 Using Stored Filters

Select from one of the predefined *Stored Filters* to limit the data being exported by clicking on the drop down arrow near the *Stored Filters* field, selecting one of the filters and clicking on the *Apply* button. *Stored Filters* available in the Integra Personal Edition include the following:

- » Non-US business address
- » US Business addresses
- » Contacts with e-mail addresses

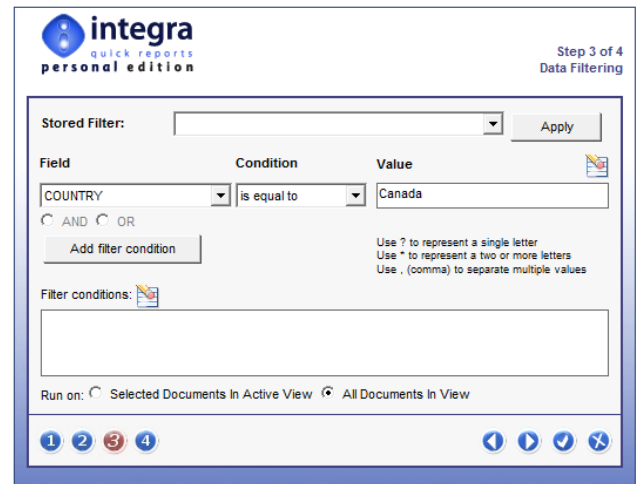
On application of a *Store Filter*, the query related to the filter will be displayed in the wizard as will the name of the selected filter. Selection of additional *Stored Filters* will further refine the selection criteria of the data.



2.5.2 Setting Filter Conditions Manually

The Filtering dialog visually consists of three main areas:

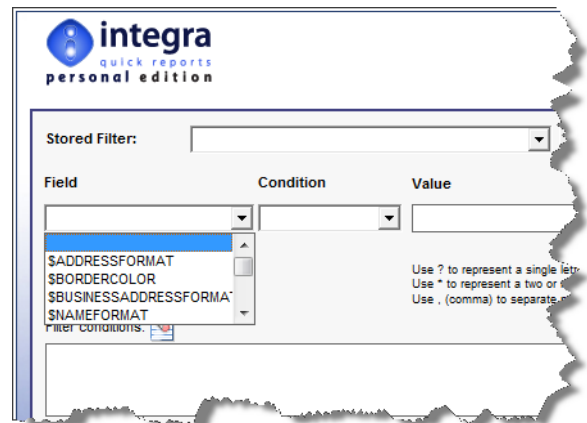
- » The condition setting section which consists of drop down menus to select the field(s) for condition setting, the actual condition itself (i.e. contains, does not contain, is between etc.) and the values to be used for the condition
- » The generated *Filter Condition* – this is where the condition created using the dropdown menus is stored in the special Lotus Notes syntax. Advanced users already familiar with Notes' search query language are able to directly enter the condition if they prefer.
- » *Run On* – allows determination of whether the condition is applied to all documents currently selected in the view or all the documents in the view.



Multiple filter conditions are able to be set in the *Runtime Sorting & Grouping* dialog combining, for instance, a date range with the value for a specific client account, member of staff or sales region. Multiple conditions can be combined using the AND or OR option contained in the wizard and each time a part of the condition is completed, the user is to click on the *Add Condition* button.

To set each filter condition:

- » **Select field** - click on the arrow in the field drop-down menu button. This will present the user with the list of the fields/columns which are being reported upon. Select the field to be used for the condition.
- » **Select the condition** – select the parameter to be used for the condition. The list of available conditions includes *contains*, *does not contain*, *Is equal to*, *Is not equal to* etc.
- » **Enter the value** – enter the value of the condition. For instance, if used with the condition *contains*, the value may be Joe Doe. If used with the condition *is between*, then two data box values will appear and the user can enter the value. If the condition is set on a date field, then two dates are expected. There is no need to surround values with quotation marks. Just enter the value in the date format of your computer.



The Integra *Runtime Sorting & Grouping* dialog is unable to validate the data being entered. If a condition is set on a date field, the user must ensure that the value or values entered are in fact dates entered in the date format used on the user's workstation. Invalid values will not be rejected by the wizard.

As indicated in the dialog box itself, can be used in values utilized for conditions. Use a ? to represent a single letter. Use a * to represent 2 or more letters. Multiple values can be separated by a comma.

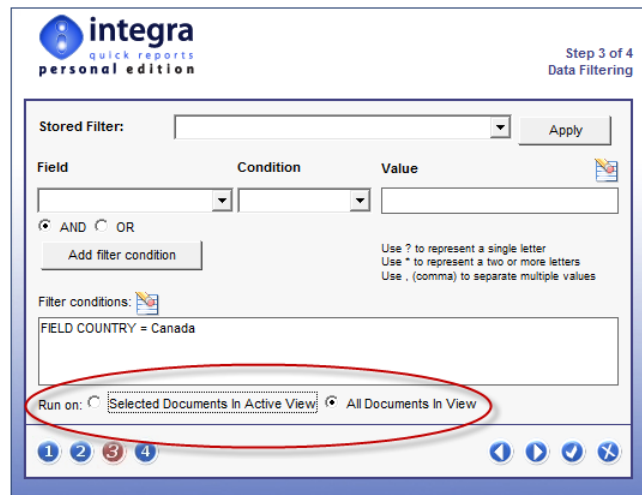
- » **Click on Add Condition button** - Once the condition has been set, click on the *Add Condition* button. This will convert the condition entered into a Lotus Note's query statement which will be shown in the *Filter Conditions* box. In the event that a single condition is entered and the user omits to click on the *Add Condition* button and proceeds to the next step in the dialog, Integra will automatically add the filter condition before proceeding.

Add filter condition

2.5.3 Selection of data set on which to apply condition

An option also exists which determines whether the filter condition applied will operate on only the documents which have already been selected in the view by the user or upon all the documents in the database.

This option is indicated by a radio button selection in the *Runs On* selection.



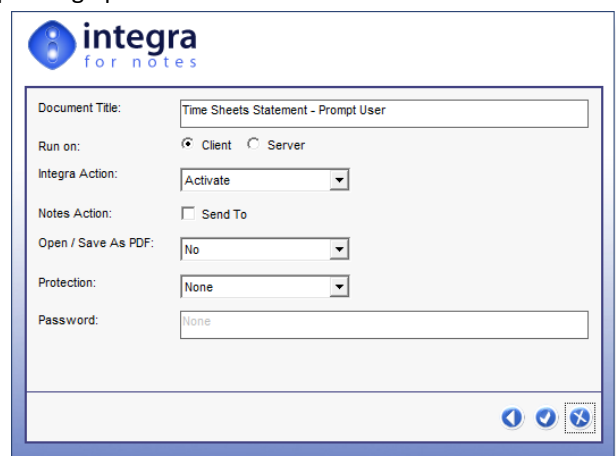
2.6 Prompt User Dialog

Depending on the choices set in an Integra Profile, when a profile is run, the profile may either automatically run and export or import the required data, usually presenting the data in Excel, Word or Acrobat, or the user may be presented with the Prompt User dialog box, allowing the user to make choices at runtime that influence how the report is distributed. The setting of the profile that controls this is the Integra Action setting which should be set to *Prompt User* to ensure that the *Prompt User* dialog box is presented at runtime.

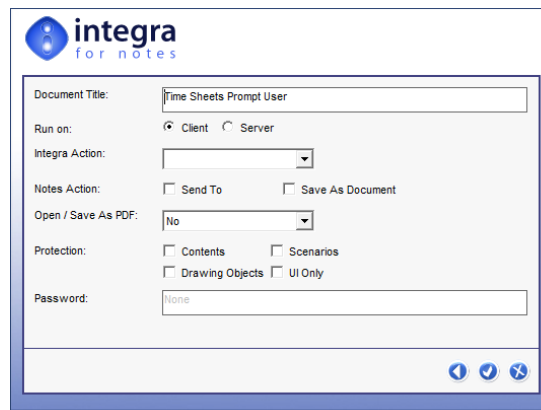
The contents of the Prompt User dialog box will vary depending upon:

- » The profile type selected. Word profiles have different properties to Excel profiles, which are in turn different to Text/XML profiles. See an example Word profile alongside.
- » The options set in the Profile
- » Whether the profile is for importing or exporting of data.

Whether or not this dialog box is even presented to the user, is a function of the properties of the selected profile. The dialog box is only presented in respect of Word and Excel profiles which have been set to *Prompt User* (see later explanation). No dialog box is presented to the user for Text/XML file profiles.



This section of the manual will describe the various available options of this prompt User dialog box. Samples of the Word and the Excel dialog boxes are shown below. It will be noted that there is almost no difference between the two profiles apart from the *Protection* section which offers different choices based on the different protection functionality available within Word and Excel.



Sample Dialog Box for Excel Profile

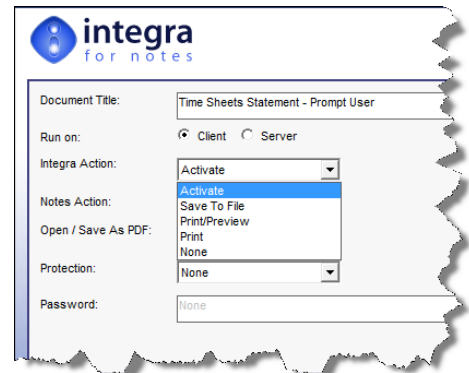
2.6.1 Document Title

The document title displays the title of the document as defined within the profile. The same title appears in the list box of available profiles and is designed to assist the user in identifying the profile.

2.6.2 Integra Action

The Integra Action field provides selection of the Word or Excel processes to be launched by Integra and determines what occurs after the data is pushed to Word or Excel. The available options are:

- » **Activate** - Integra will activate the Word or Excel application and bring Word or Excel and the created document/spreadsheet active on the screen. This action allows the user to check and amend the created document before printing, sending or saving it back to Notes as well as to have access to all the functionality of the products (assuming the protection settings allow this – see below).
- » **Save To File** - This action will save the document straight into a file on your file system. If the filename has been predefined within the profile, Integra will save the exported file using this filename. If no filename has been specified, the user will be prompted with the standard Windows *File Save* dialog box.
- » **Print/Preview** - This action is similar to the *Activate* action in that Word or Excel will be brought up on screen with the created document/spreadsheet, however, it will be automatically activated in *Print Preview* mode. The user will still be able to amend and work with Word or Excel once they exit from *Preview* mode.
- » **Print** - This action will send the Word document or Excel spreadsheet directly to the printer. You will be prompted with the standard Word or Excel print dialog box for selection of various options.
- » **None** – When this option is selected, no Integra action will be executed. This option is only useful in conjunction with one of the Notes actions. E.g., you may want to email an exported Word document or Excel spreadsheet directly without any of the other Integra actions.



2.6.3 Notes Action

The Notes Action field allows definition of the specific Notes-related actions available to the user at the time of running the Integra profile. The options available to the user depend upon the settings of the selected profile and this option may not even be presented to the user within the dialog box. The two available options, any and all of which may be disabled, consist of the following two options:

- » **Send To** – enables the sending of the generated Word document or Excel spreadsheet via email in accordance with the *Send To* settings of the profile.
- » **Save As** – enables the writing back of the Word document or Excel spreadsheet to a Notes document in the current or a different Notes database.

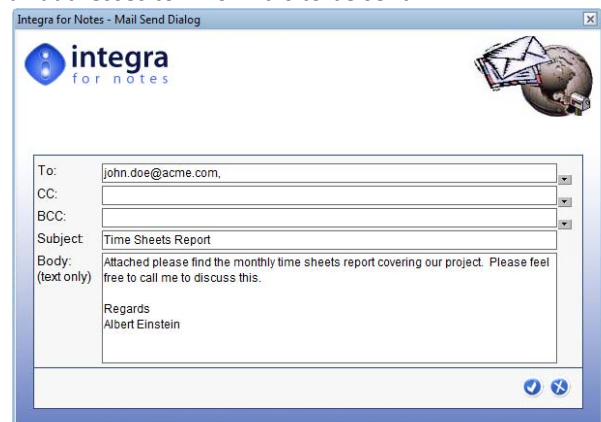
These options are further defined below:

2.6.3.1 Send To

This action will send the created Word document, Excel spreadsheet or Text file as an attachment within an email message. The address to which the profile is to be sent (*To, cc and bcc*) and the *Subject* field will be taken from the definition held within the profile. Setting these options is further described in the *Integra for Notes Designer's Manual. (Creating Integra Profiles – The Notes Tab – Send To)*.

An Integra profile which has the *Send To* option enabled, will have an option set which determines how the mailing function is to operate. The available options are:

- » **Immediate** – this will send out the created Word or Excel document to the addresses immediately with no opportunity for the user to confirm or change the e-mail addresses to whom it is to be sent.
- » **Confirm** – this option will display the *Integra Mail Send* dialog box to the user with the address details as defined in the profile already set. This will allow the user to confirm, modify, remove or add e-mail addresses to whom the file is to be sent.
- » **Memo** – this option will attach the created Word or Excel file into a new *Memo* form taken from the current user's mail file. This extends all the capabilities of the user's mail file such as *Delivery Options, Encryption, Signing, Return Receipts* etc, enables the user to store the file in a folder and utilize any custom features built into the user's mail file. The Outgoing mail is also stored in the mail file's *Sent* folder.



If the *Send To* option is used in a Word profile of type *mail merge* in conjunction with the Word actions *Activate* or *Print/Preview* then Integra will send an email with a Word file attachment per selected Notes document. After all Notes documents have been processed, the single sent Word documents will be collected and activated as one Word document (separated with page breaks) in the Word *Print/Preview* mode. The Word action *Activate* will be ignored in this case, as the single Word documents have been sent prior to activating Word, hence Integra is blocking the possibility of the user modifying the documents after they have been sent.



In the case of a Word export profile which has its Word Action set to *MailMerge*, only the *Immediate* option will be available for sending e-mails. This is as MailMerge profiles are typically sent to multiple addresses, it is impractical to allow user entry or confirmation of the e-mail address for each addressee in turn.

2.6.3.2 Save As...

Integra provides the facility for Word, Excel, PDF and Text/XML files created through a profile to be written back into a Notes document within the current or another Notes database. The profile would allow identification of the method to be used for the writing back, the form to be used etc. This is further described in the *Integra for Notes Designer's Manual*. The only setting involving the user is his selection of the *Save As* option in the Integra dialog box. If this is selected, then the document will be written back in accordance with the settings as defined within the profile while if it is not selected, the data will not be written back.

2.6.4 Save as PDF

By selecting either the *Before Launch* or *After Launch* PDF options, the user is able to automate the process of converting their Word or Excel document directly to a PDF file. This option presupposes that the *Configuration* document of the Integra database has been set to enable PDF output and that the workstation from which the PDF conversion is being effected has either one of the supported PDF creation solutions such as IntegraPDF configured.

2.6.4.1 Before Launch

When the *Integra Action* is set to activate, normally the Word or Excel document will be presented on screen. By setting the PDF option to *Before Launch*, instead of the Word or Excel document being presented on screen, a PDF file will be presented. This ensures that the user does not tamper with the data.

2.6.4.2 After Launch

The business need may require that the user is presented with a Word or Excel document which he is then able to modify or complete. An example could be a quotation. In this case, by setting the PDF option to *After Launch*, the user is able to complete the Word or Excel document and after closing either application Integra will convert the document to a PDF file. This PDF file which is e-mailed, stored in a Notes document or saved to the file system.

2.6.5 Protection

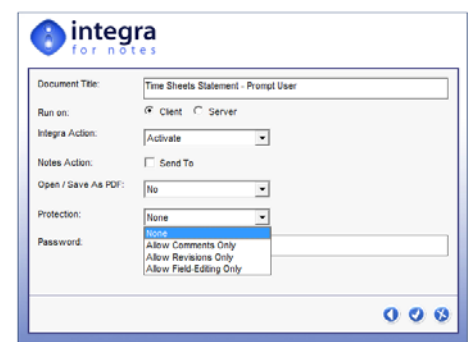
If a user is converting Notes data into a Word document or Excel spreadsheet, a requirement may arise to restrict the ability of the recipient of the reported data from modifying the data and claiming that that was the data generated by Integra.

The protection options available in a Word profile are different to those available in an Excel profile as the underlying applications offer different functionality. The following sections define the available functionality in each case.

2.6.5.1 Protection of Word Documents

Word provides different levels of protection within documents and Integra provides three options within the Protection field.

- » **None** - The Word Document remains unprotected and the entire document can be altered.
- » **Allow Comments Only** - The user can only add comments to the Word Document. Comments are not visible on the document (except for the marker which indicates a comment to the user) and are not printed. This option delivers the highest level of protection.
- » **Allow Revisions Only** - The user can alter the document content, but the changes will be clearly indicated with different color and font properties. Text parts deleted by the user are not removed but stricken out (~~stricken out~~).
- » **Allow Field-Editing Only** - The user can only alter the contents of the fields contained within the document.



When the profile has been defined in such a manner as to "Prompt User", the user will be prompted at runtime for the Protection option using the default setting for protection as defined within the profile. The user can overwrite the default if the profile is set to *Prompt User*.

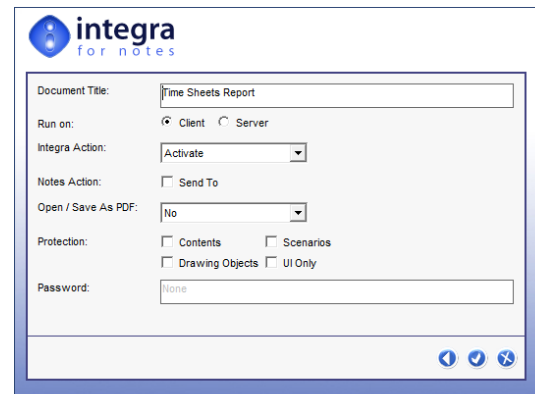
If any one of the above options (except "None") is selected at runtime, the user is also prompted to enter a protection password in the *Password* field defined below.

2.6.5.2 Protection of Excel Spreadsheets

Excel provides four different levels of protection within spreadsheets. Multiple protection schemes can be selected and therefore the user is presented with a set of Checkboxes. The facility exists not to select any of the protection options.

The available options provide the protection outlined below:

- » **Contents** - All data cells in the Excel spreadsheet are protected against editing.
- » **Drawing Objects** - This option will protect all objects from being moved or resized (such as textboxes, pictures, charts,...).
- » **Scenarios** - This option will protect scenarios (forecasts) from being modified
- » **UI Only** - If you select this option then the entire spreadsheet is protected, with the exception of macros.



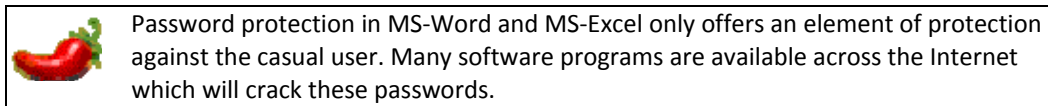
When the profile has been defined in such a manner as to "Prompt User", the user will be prompted at runtime for the Protection option using the default setting for protection as defined within the profile. The user can overwrite the default if the profile is set to *Prompt User*.

If any one of the above options (except "None") is selected at runtime, the user is also prompted to enter a protection password in the *Password* field defined below.

2.6.6 Password

This field is only available when the user selects one of the Protection options outlined above. The user will be prompted to enter a password. Integra will create a random password as a default. The minimum password length is 5 characters.

If one of the security options is selected in conjunction with any of the Notes Action options, Integra will create a random password hidden from the user. This combination of options would usually be chosen when creating documents (e.g. reports) where neither the user nor an eventual recipient of an electronic copy of the document is allowed to alter the document.



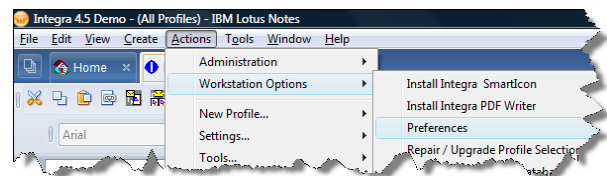
2.7 Runtime Foreign Language Support

Integra for Notes supports the presentation of runtime messages, dialogs and error messages in various languages, namely English, German, French, Italian and Spanish. In addition, Integra exposes these messages to the user so any unsupported language can be translated by the user. These messages are accessible through the *Messages* tab of the *Configuration* document.

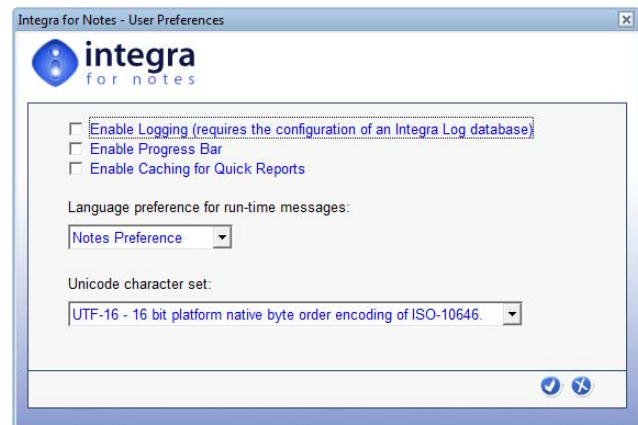
When running Integra profiles, either through the Notes client or a supported web browser, all runtime messages, dialog boxes and error messages will appear in either English, French, German, Spanish or Italian depending on the language settings of the Notes client or browser.

When being used through a web browser, Integra will display messages in the appropriate language based upon the language options set in the web browser.

When being used through a Lotus Notes client, the choice of language will be based upon the *Language Preference* option set within the Integra database on a user by user basis. Setting of this preference is made through the *Preferences* option. This is accessible through the *Actions* → *Workstation Options* → *Preferences* menu option when positioned within the Integra database.

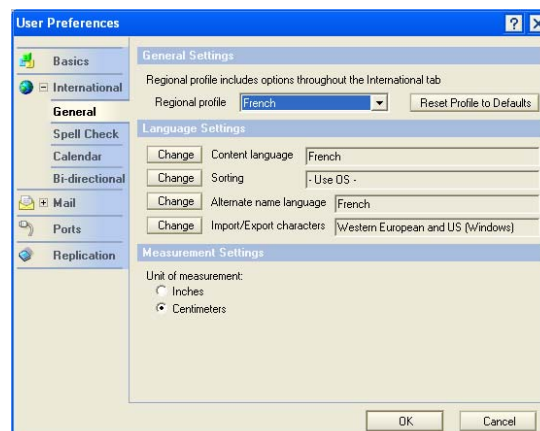


This selection will present the user with the following *Preferences* dialog box where there is the *Language Preference* field. This field allows selection of either of the supported languages or selection of the *Notes Preference* option. This last option will utilize the language options which are set for the user's Lotus Notes language preference.

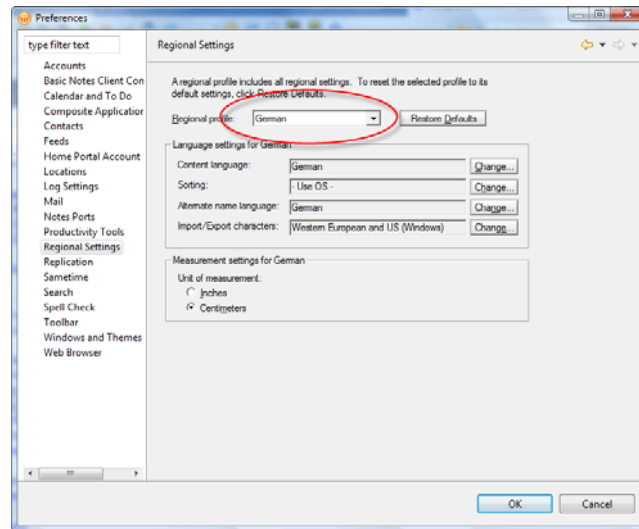


Setting the Lotus Notes Language Preferences is undertaken in a manner which varies according to the Lotus Notes version in use.

To set the Lotus Notes Language Preferences in versions of Lotus Notes prior to Notes 8, select the *File* → *Preferences* → *User Preferences* menu option. This will open a dialog box in which the user should select the *International* option and select the *Regional Profile*.



To set the Lotus Notes Language Preferences in versions of Lotus Notes 8 and above, select the *File* → *Preferences* menu option. This will open a dialog box in which the user should select the *Regional Settings* option and then select the *Regional Profile* drop down menu.




From the next use, the Integra runtime message boxes will appear in the chosen language. Choosing any unsupported regional settings will result in Integra operating in English.

3 Running Integra Profiles from a Web Browser

Integra for Notes supports the running of Integra export profiles from a supported web browser. No support is currently available for web browser based importing, although imports can be run on a scheduled basis.

A web browser cannot be used to create or modify Integra profiles as this functionality requires the use of facilities available only in the Notes client.

While running Integra from a Notes client allows selection of an Integra SmartIcon, this functionality is not possible within a browser and therefore the triggering of an Integra profile can only be effected by adding an action button, button or hotspot within the application being called by the browser. 

The section of the *Integra Designer's Manual* entitled **Preparing a Database for Integra Web Access**, describes the exact changes that need to be effected to a Notes database to enable it for Integra web access. This section describes the user experience in running an Integra profile through a web browser.

As also defined in section 8, the action button or hotspot can be set either to launch the Integra Profile Dialog Box or alternatively it can be set to execute a specific named profile.

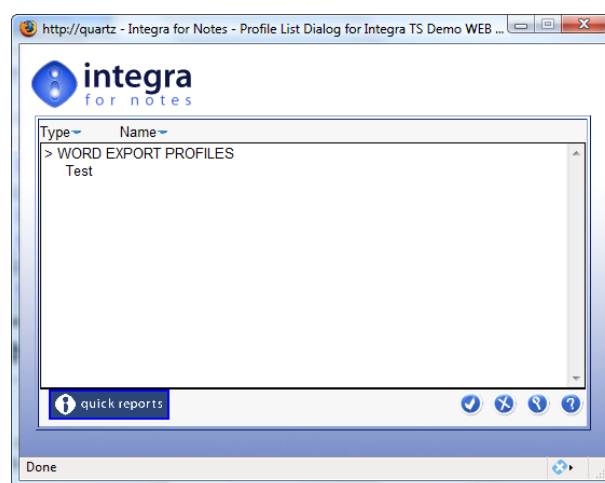
For the purposes of this section, we shall assume that the Integra profile or Profile dialog box are being launched from an Action Button however all these instructions are equally relevant to the running of Integra profiles from a graphical hotspot or a standard button.

This section will not describe the process through which a browser is used to access a Domino database. An assumption is made that this process is already clear to users and it is specifically the use of Integra in this context that will be described.

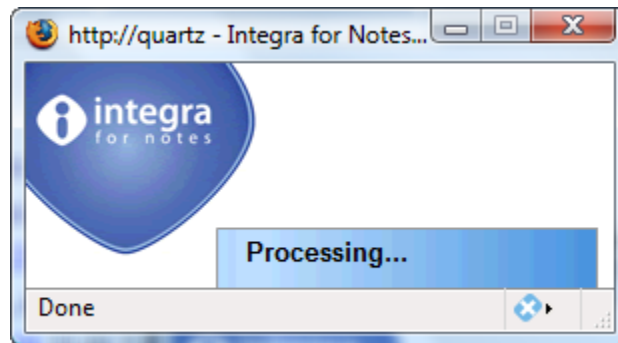
The user interface for running Integra profiles via a Notes client or a Web Browser has been intentionally kept as similar as possible and this section will therefore not repeat the functionality of each of the similar options.

3.1 The Integra Profile Dialog Box

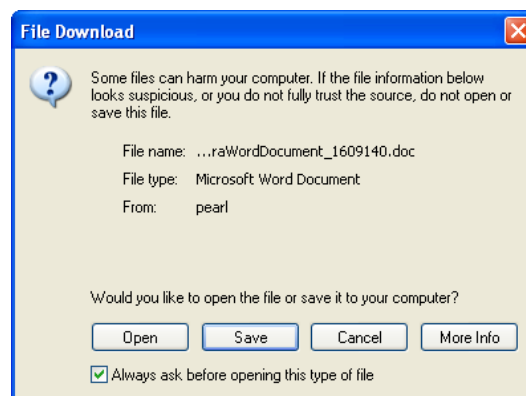
On selection of an action button which launches the Integra Profile Dialog box, the user will be presented with the following screen showing all the Integra profile available and linked to the current Notes database. You will notice that this is the same dialog box as presented to the Notes user client.



On selecting the desired profile, Integra will access the data from the Domino server during which a “processing status” window will be presented to the user. Integra will then push the requested data into the Word document or Excel spreadsheet.



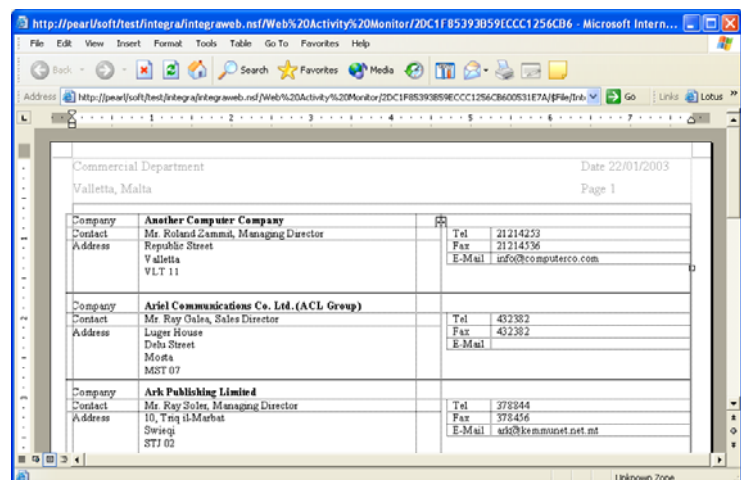
Depending on the settings of this option, the user may be presented with a confirmation dialog allowing the user to select whether they wish to *Open* or *Save* the generated document.



Note that the *Always ask before opening this type of file* option is available. Turning this option off will automatically *Open* or *Save* when accessing either a Word or an Excel file. It is therefore possible for the user to select the check box to determine that this dialog box is not presented to the user each time.

Selecting the *Save* option will result in the user being presented with the standard Windows dialog box where a file name and path can be selected and into which Integra will then save the generated file. On successfully saving the file, control will return to the browser window focused on the Notes database.

In the event that the *Open* option is selected, the user will next be presented with the browser window containing the Word document or Excel spreadsheet. See the screenshot of a Word document alongside and an Excel example overleaf.



References

Additional assistance is available to users as listed below:

User manuals	www.integra4notes.com/manuals
On-Line Demonstrations	www.integra4notes.com/demo
FAQ's	www.integra4notes.com/faq
Support	www.integra4notes.com/support
Available Training	www.integra4notes.com/training